

We are harmonizing members of the Barbershop Harmony Society



# THE INCORPORATED PRESS



Bulletin is published by the Manhattan Kansas Chapter and Chorus

Volume 32, Number 3 Karen Nanninga, Editor and Publisher March 2009

Inside this issue:



## Singing Valentines 2009

### A job well done

By Ken Lyle



President's Message Page 2



Crunch Time

Purple Ties Page 3

Harry Harmony

Show Images  
Renewal Photos Page 4

Komments by Karen Page 5

Riser Etiquette

Calendars Page 6

While most of us in the Chorus are breathing a sigh of relief at the completion of the Singing Valentines activities, **Bob and Telva Swenson** and their loyal crew continue to work diligently to collect from those who promised to pay, but haven't done so yet, and to try to get all the expense statements in order. Take time to thank them for all they do for the Chorus. Compared to 2008 the number of requests was down significantly. There were 119 requests and all were delivered! Ninety of the requests were delivered on Friday and the remainder on Saturday. It is estimated that there were 1900 people who heard our quartets as they performed. Income was \$4500 (numbers are approximate and hopefully conservative) less \$2000 expenses leaving \$2500 profit. This compares to a profit of about \$3500 for 2008. The economy and the fact that Valentines Day occurred on Saturday were two of the contributing factors for the decline in revenue.

Significant changes were noted in several of the components of the Singing Valentines operation starting with the emergence of three new quartets: 1) **Terry and the Graybeards**, 2) **Sugar Daddies** and 3) **Three Hoots and a Holler**, joined the ranks of our quartet lineup. Much of the credit for this accomplishment goes to **Loren Alexander** for his organizational skills and persis-

tence in making this happen and to our Music Directors for their coaching and support.

**Bart Bartholomew** had the web page up and running and the on-line orders increased dramatically this year. There were 50 e-mail orders (42%) compared to 70 phone orders. The more orders we receive on-line, the less time and trouble is required to collect on unpaid orders.

With the demise of Polaroid film, digital cameras were used in most of the Singing Valentines deliveries. A system was devised so that the digital photo taken of a recipient could be accurately and quickly matched to that person's e-mail address. The image could then be downloaded into a laptop and forwarded to the recipient. **Karen Nanninga** was responsible for a lot of this activity.

Another "change" was utilizing the family life center (Presby Place) of the First Presbyterian Church as our quartet lounge. Special thanks to **Helen Cooper, Joan Thomson** and **Fred Wachsmuth** for their roles in making this happen. The amenities of the facility as well as the easy access for parking made this a big hit with the quartets, presenters and drivers.

As we look forward to the 2010 version of Singing Valentines, and keeping in mind that change is inevitable, but not always good, let us know your thoughts of what we can do better ♪

The chapter and chorus meet every Thursday evening at 7:30 p.m. at the First Methodist Church Activity Center on the corner of Poyntz and 6th Street, Manhattan, Kansas.

*InCider Press*, a monthly publication, is the official publication of the Manhattan, Kansas chapter of the Central States District (CSD) of the Barbershop Harmony Society.

The Manhattan Chapter is the home of the Little Apple Chorus. The chapter and chorus meet every Thursday evening at 7:30 p.m. at the First Methodist Church Activity Center on the corner of Poyntz and 6th Street, Manhattan, Kansas.

For more information about meetings or joining call or write to the Editor. (see below)

#### Chapter Officers

President.....Harvey Kiser  
 Membership and Chapter Development VP  
 and President Elect .....Bill Hanson  
 Music & Performance VP.....Loren Alexander  
 Marketing and  
 Public Relations VP.....John Thomason  
 Secretary.....Pat Caffey  
 Treasurer.....Bob Swenson  
 Member at Large.....Don Thomson  
 Member at Large.....David Fink  
 Member at Large .....Chuck Marr  
 Member at Large .....Jim Lindquist  
 Member at Large ..... Fred Wachsmuth  
 Member at Large ..... Ken Lyle

#### Appointments

Musical Director.....KenLang  
 Associate Musical Director .....Don Thomson  
 Assistant Musical Director.....Myron Calhoun  
 Music Chairman.....Bob Ridley  
 Show Chairmen.....Jim Lindquist and  
 ..... Don Thomson  
 Singing Valentine Chairman .....Ken Lyle  
 Youth in Harmony Chairman .....Travis Troyer  
 Equipment Manager .....Fred Wachsmuth  
 Uniform Manager.....Chuck Marr  
 Bulletin Editor.....Karen Nanninga  
 Web Master.....Bart Bartholomew  
[www.littleapplechorus.org](http://www.littleapplechorus.org)

#### Bulletin Editor

Karen Nanninga  
 1379 26th Road  
 Axtell, Kansas 66403

Phone: 785-736-2870  
 email: [taren@bluevalley.net](mailto:taren@bluevalley.net)

Unless carrying a byline or some form of credit to borrowed sources, all items in this bulletin are by the editor and do not necessarily reflect the opinions of the chapter or board. All photos in the bulletin are by the editor, unless otherwise identified.

*All chapter officers are expected and chapter members are encouraged to contribute their ideas on a regular basis*

## Performing times are coming up

By **Harvey Kiser**, President

These are performing times for our Chapter and its chorus and quartets. The *Singing Valentine* event was very successful under the capable leadership of **Ken Lyle**. Three new quartets developed and qualified to perform *Singing Valentines* along with four of the chapter's registered quartets. Thanks to **Loren Alexander** for his leadership in encouraging the two that came from a double quartet. The third new quartet developed from the synergy with the other two. The barbershoppers and their ladies and families enjoyed a *Singing Valentine* Afterglow at the *Pizza Hut* reminiscing about the fun and joy experienced during the two days.

Preparing our performance for the annual show on April 11 is getting to the fun part. We are learning the interpretation and choreography that is being taught by our Director **Ken Lang** and Associate Director **Don Thomson**. We are looking forward to having the **Wamego Dutch Mill Sweet Adelines** perform three songs with the chapter's chorus. There will be around 100 singers on stage.

**Bill Hanson** has arranged an Afterglow at the *VPW* hall after our evening spring show, and the chapter quartets and the headliner quartet, **Lucky Day** will entertain us.

Two weeks after our show, the chorus has been invited to perform twice -- once with the **K-State Men's Glee Club** on April 23 and then on April 24 for an **American Legion** convention. April might be considered our lucky month.

Guest nights will be held each Thursday in May. New men will have the opportunity to enjoy a cappella singing. **Bill Hanson**, VP for Chapter Development and Membership and committee members of **Chuck Marr**, **Steve Cross** and **Ken Garwick** are already making plans. Summer will be the time for the chorus to perform at church services when the choirs are on sabbatical. **Tom Phillips** is providing the leadership for this activity with support from **Loren Alexander** and **Steve Fisher**, the previous years' organizer.

Two highlights this summer will be the **International Convention** in Anaheim, CA in July and **Harmony University**, St. Joseph, MO in July/August. Some members will be attending the convention while all of the rest of the chapter members may enjoy the quartet and chorus competition on the Web cast. **HU** allows members to enjoy learning and experiencing the art of barbershop singing from gold medal award winning quartet members.♪





## Crunch time

By **Loren Alexander**

We have five (only 5!) Thursday evening rehearsals before our Annual Show: Singspiration! Check the schedule for each rehearsal to see our plan for getting each song ready for performance. Note that we should have ourselves off the printed music for all songs by now -- crunch time.

Ah! But I noticed a problem with myself, and perhaps you might share this problem. When I review a song at home, I sometimes (often?) find a word that escapes me, or that I sing incorrectly. Sometimes I substitute a synonym or some other word.

The same goes for notes. Even this late in the game, **Ken** now and then notices that we sing a note incorrectly on a song we've worked on for months! Some Section Leaders have begun sending emails identifying such notes as well as other problem segments to work on. These notes help me a lot, because I often have little or no time to make a note to myself during rehearsal, then I forget where the problem was. Ugh!

We probably have a huge variety of ways to practice our songs at home. I work best in the early morning, before anyone gets up and before the TV, telephone, etc. get busy. I silently say the words and/or run through the songs by memory as I pace the floor. Then it becomes a matter of finding a time during the remainder of the day to practice aloud, in my shop or on a walk.

Whatever works for your daily activities, how about each of us finding a time to work on our music (words, notes, dynamics, tone, actions) sometime almost every day. And do you experience the improvement of your singing quality when you get several days in a row of practicing out loud? This singing skill parallels any other skill -- practice makes perfect (or at least excellence), and non-practice makes imperfect.

As we go into these last weeks before our big show, let's strive for daily work on different elements of our craft. Practice everything you can think of, including loosening up your body (wow! I do have to work on that!) in order to communicate to your audience by physical actions how you interpret the text and music (happy, serious, emphatic, sad, joyous...). We have great songs with wonderful messages for the world.

Let's demonstrate love, fun, skills, friendship to show that life on this earth can contribute to joy, even when we face huge life problems. And a big "Thank you!" to our Directors and to each other, as we go into our final preparations for those great audiences right here at home!♪

## Purple ties are it

By **Chuck Marr**



Our show 'uniform' will be a little simpler this year since it will involve no costumes or clothes changing. The show 'uniform' will be your tux; purple vest; a plain white dress shirt (not your 'winged collar shirt'), a purple satin tie, and a purple handkerchief tucked into your tux pocket. The second half of the show we will remove our coats and appear in white shirts with purple vest and tie.

A trend now in tuxes is to wear long ties. If you watched the Academy Awards recently you would note that most men at that event wore long ties with their tuxes. This does not mean that we will abandon or never use our red bow ties/cummerbunds. They will be very appropriate for Singing Valentines, other formal performances, and perhaps a future show.

Cost of the new purple satin tie and handkerchief is \$18 (a real bargain since the cheapest tie that I saw in a recent catalog we got was \$39). According to our uniform policy, the member share of the \$18 cost would be \$9. However, since the chapter uniform expense also becomes a show expense of nearly \$500, we are asking members to support the chapter by paying the full \$18 cost (or you can round it off to \$20 if you want).

Some would recognize that a purple tie in Wildcat Country is almost a necessity. We have enough purple ties/handkerchiefs to supply members not singing in the show. They will be distributed at chapter meetings prior the show.♪

## An Irish Adventure with Harry Harmony



Harry Muldoon Harmony lived alone in the Irish countryside with only a pet dog for company. One day the dog died, and Harry Muldoon went to the parish priest and asked, Father, me dog is dead. Could ya' be saying' A mass for the poor creature?'

Father Patrick replied, 'I'm afraid not; we cannot have services for an animal in the church. But there are some Baptists down the lane, and there's no tellin' what they believe. Maybe they'll do something for the creature.'

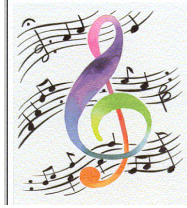
Muldoon said, 'I'll go right away Father. Do ya' think \$5,000 is enough to donate to them for the service?'

Father Patrick exclaimed, 'Sweet Mary and Joseph. Why didn't ya tell me the dog was Catholic?'

## Show images

By **Don Thomson**

Associate Director



Each year we try to present a different type of show. If you remember, last year we had a "Music Man" theme and we dressed as River City residents. This year we are presenting a more formal image with our tuxes, new vests (last year) and our new purple ties and handkerchiefs to accent the look. Next year we will be back in costume with Ragtime Cowboy Joe (Show) II. I bring this up for several reasons. You all seem to enjoy dressing up in costume, and I think our audience enjoys it as well. I am always amazed at the creativity of some of you in assembling your costume.

This can be time for you to be thinking a year ahead. Have you always wanted a pair of cowboy boots? or a cowboy hat?...or do you need a replacement western shirt or some black jeans? These items could be good items to put on your birthday list.

Next, I want to thank **Chuck Marr** (and you should too) for his work as keeping our uniforms and costumes in order. This is NOT an easy job. I can tell you that **Chuck** has had to be persistent and patient to follow up with ordering various costume and uniform pieces. We cannot thank him enough for the job he does for us!

We want you to know that we also try to be considerate of having too many uniform options. There are some choruses that change their look every year, but changing often can be quite expensive. Again, we try to keep the cost of participating in the chorus reasonable, and this last uniform enhancement (tie and handkerchief) is a very inexpensive way to modernize our look. The board is very cautious and has considerable discussions before approving any uniform changes. Also, our uniform policy includes the chapter paying for 50% of our uniforms, and that is another way that the board is showing their consideration.

**Chuck Marr** has announced very articulately (on several occasions) what uniform we will wear for our show on April 11th. However, it seems that each Thursday evening someone has a question about it. Here it is one more time. On the first half of the show we will wear our tuxes. The "tux look" includes black shoes and socks, a white shirt (plain white this year, not the tux shirt), the new purple vest, the long purple tie, and the purple handkerchief. On the second half of the show we will shed our tux jackets, and perform with the white shirt, vest, and long tie, tux pants, black shoes and socks. Our costume change is minimal this year!

We are going to look really sharp on stage this

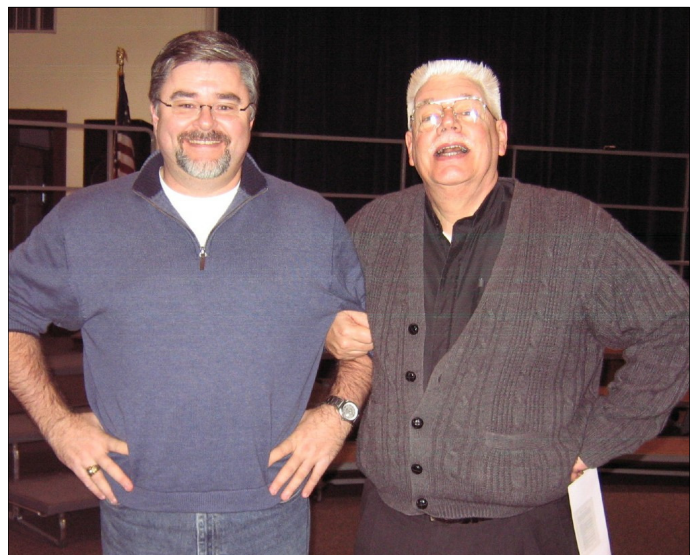
year!

We are beginning to sing with confidence, and this will enhance our image as well. Most of you are to be commended for learning the music on schedule, and for rehearsing with energy when on the risers. Now we need 100% to do the same. It appears that **Ken** will have us peaking at just the right time. It is, however, important that we all try to make every rehearsal between now and Showtime. Repetition is a big key to our being successful on April 11th. See you next Thursday!♪

## Another great year of music



**At a recent chapter meeting the men above received their membership cards. Pictured are John Schlender Steve Thompson, Brian Swenson, Larry Bowers, Bob Swenson, Terry Smith, Mason Swenson and John Thomason.**



**Brian Wells and Tom Miles also received the new membership cards recently.**

## Komments by Karen



Wow, it is hard to believe it is almost show time. I trust all of you know the songs and are in the fine tuning stage. I am looking forward to seeing the great show for 2009.

I have shown our pictures of Ecuador several times. The wedding there was so very elegant. Many flowers. But then Ecuador supplies 90% of the world with roses. They are 25 for a dollar there. Terry enjoyed the trip also. We would love to tell you about it, if you want us too.

During the month of February we were asked to give an exchange student a second chance. He was from Italy, but he just could not handle what was required of him and he had to return home before school was out. We felt bad for him. Rules are rules.

It was suggested that I publish the riser etiquette rules again. So since I have so few articles this time, the space filler is the rules of riser etiquette.

Elsewhere you will see the deadline for the InCider next month is April 9, but I will gladly accept articles about the show from you.♪

## Riser etiquette

From a past issue

I am going to give you the Ten Commandments of Riser Etiquette so you can have them all before the Spring Show. There are enough new members who maybe haven't heard them and a review doesn't hurt anyone.

### 1. No talking while on Risers

- ...unless given permission by the director
- Being on the risers is not a social time.
- The director will give you time to relax and visit
- For questions needing an immediate response raise your hand

### 2. The Primary Position while on the risers is "LEAN AND BEAM"

- There will be times when you are asked to make gestures
- There will be times when you are asked not to "beam"

### 3 Primary focus is on the director.

- No eye darting

- Your relationship is with the director (not your neighbor).
  - At times the director may ask you to have a relationship with the audience
- Find your window and stay in it.**
    - You need to see the director.
    - The chorus needs to look balanced.
  - Look Confident.**
    - The only way you can do this is to have your music learned.
    - You should be able to be asked to stand anywhere on the risers and hold our own.
  - Keep a positive attitude.**
    - The director may ask you to become uninhibited (play along with him).
    - The director may tell a joke. (laugh)
    - The director may get angry with a person or section (accept the criticism and continue to work toward the common goal.)
    - The director may ask you to perform some choreography that you have never done
  - Take the pitch with the rest of the chorus**
    - Anticipating the taking of the pitch is unprofessional, as is not singing the pitch.
    - Getting the correct tonal center is imperative to starting the song. The only way is to get the right pitch, and breaking into a chord.
    - Watch for the director to give the signal for the pitch; then listen, and watch for the gesture to sing it.
  - Be careful to not make random movements with your extremities**
    - Hand movements are the most common.
    - Body gestures are OK if in context; scratching one's nose is not.
  - Recommendations concerning interpretation, etc should be made privately to the director, not during rehearsal..**
  - Even if you do not agree, remember, **"THE DIRECTOR IS ALWAYS RIGHT"!**



Manhattan, Kansas  
 Axtell, Kansas 66403  
 1379 26th Road  
 Karen Nanninga



**Chapter meetings begin at 7:30 p.m.  
 Quartet/polecat practice begins at 7:00 p.m.**

**Calendar of Events:**

March 12	Chapter Meeting Ladies Night
March 19	Chapter Meeting
March 26	Chapter Meeting
April 2	Chapter Meeting
April 9	Chapter Meeting <b>InCider Articles Due</b> Ladies Night
April 12	Easter
April 13	Board Meeting

**Deadline for submitting articles for the next  
 InCider is April 9**

**Upcoming Events**

**April 11 Spring Show at 2:00 p.m. and  
 7:30 p.m.**

**After-Glo at 10:00 p.m. at American Legion**

**April 24–25 CSD Spring Convention,  
 Springfield, MO**

Thanks to the following for contributing articles—

**Harvey Kiser, Loren Alexander, Chuck Marr  
 and Don Thomson**

*Do the write thing and send an  
 article for your newsletter.*